



## FGD Vacuum Belt Filters

真空皮带机

### Technology Key & Advantages

The belt, made from finely woven material, collects the chlorine laden gypsum slurry in a continuous process and ensure the solid in the drained water being less than 0.5%.

The belt material acts as a filter to drain off the water, after washing of the gypsum to remove the chlorine content below 100ppm, via an advanced vacuum system which reduces the moisture content of the gypsum to an absolute minimum of less than 10%.

The filter belt, moving in a guidance system controlling the belt alignment via a differential sensor adjusting an airbag mechanism to ensure parallel running of the belt.

The filter belt is flushed to clean the woven material of residue after discharge of the vacuum dried gypsum.



APA Vacuum Belt Construction

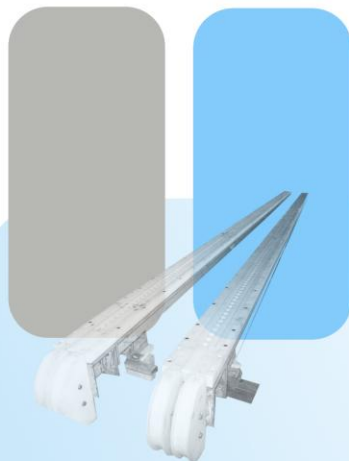
APA 真空皮带装置

### 技术关键及可靠性

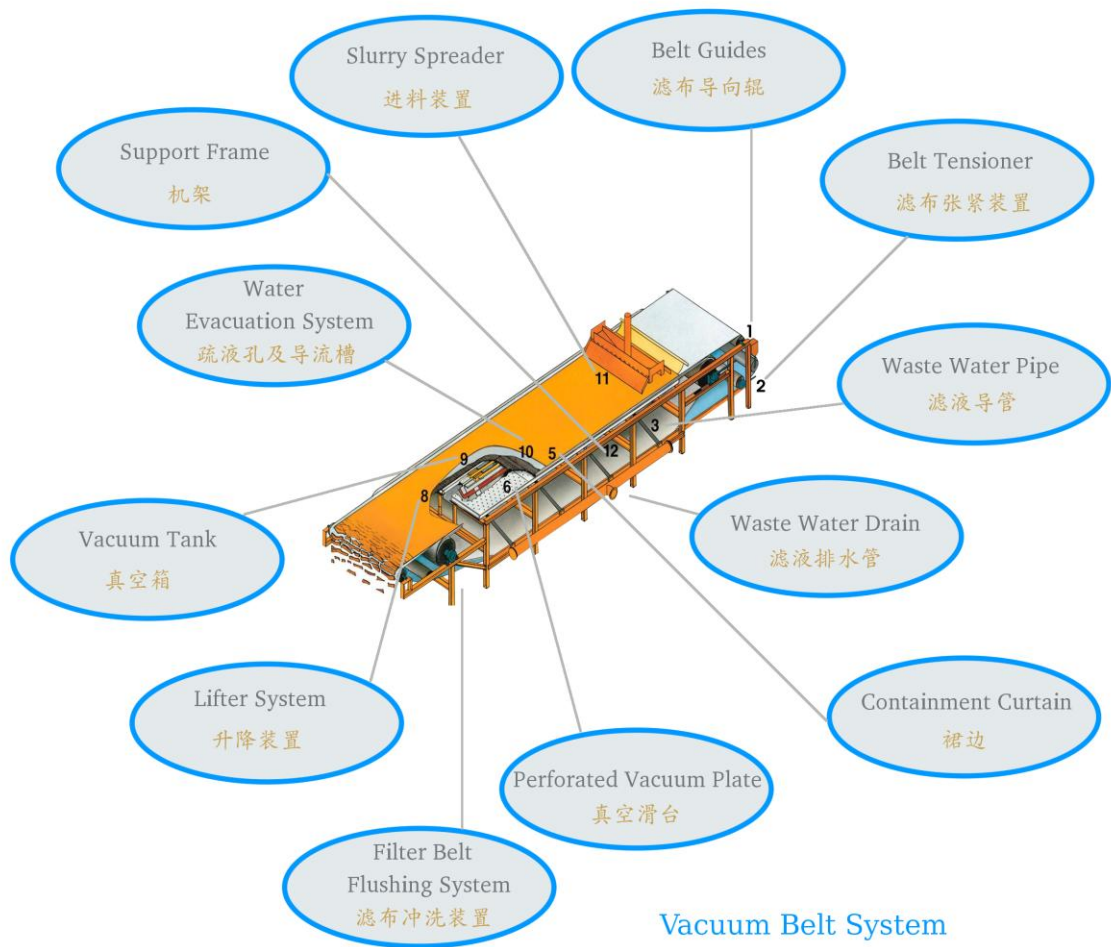
APA 真空皮带机采用精细高质量的过滤带以确保皮带过滤机的连续运行并保证过滤后的滤液中的含固量不超过0.5%；石膏含水率不超过10%；石膏中氯离子含量不超过 100ppm。

为增加橡胶滤带的使用寿命，APA 真空皮带机在橡胶滤带与真空滑台之间设摩擦带，从真空滑台两侧通入润滑油，起到密封、润滑及降低摩擦带温度的作用。

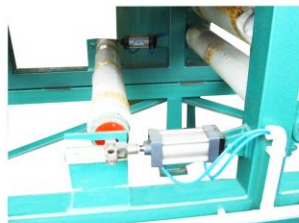
APA 真空皮带机不仅引进了有效的升降和纠偏装置，还配有相关的自动控制仪器、仪表，不仅保证系统高效正常运行，而且保证在出现故障时，自动实现对设备的保护。



APA Engineering  
T: 61-2-82688686  
F: 61-2-82688687  
W: www.apagroup.biz  
E: info@apagroup.biz



真空皮带系统



Air Bag Mechanism

气囊原理



Belt Lifter Mechanism

纠偏及升降装置

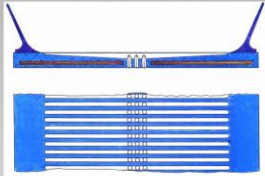
## Vacuum Pump Arrangement

真空泵



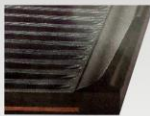
CYCLOTRON  
Last Stage of Waste Water Purification

废水过滤系统



Principle of Slurry  
Containment on Vacuum Belt

真空带上的浆液分布原理



Pictorial Presentation  
of Slurry Containment

浆液分布

Belt Guide Construction and  
Vacuum Extraction System

滤布导向辊及导流槽

